

1,154 ACRES

RAIL-SERVED LOGISTICS & COMMERCE PARK

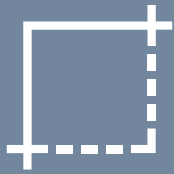


PROPERTY FEATURES

- Rail-served park zoned Heavy Industrial
- Planned on-site rail/truck transload facility with frontage along Union Pacific mainline and I-70 corridor
- Pre-approved City of Aurora lots for sale
- Construction-ready sites Q2 2020
- City of Aurora planning and review process
- Multiple active metro districts in place
- Customized rail service: multiple switches per day and 7 day per week service
- Through the fence agreements with Colorado Air & Space Port
- Foreign Trade Zone 293
- Xcel Energy MegaSite Certified



PROPERTY DETAILS



Site size
1,154 acres (divisible)



Zoning
Heavy industrial



Proposed uses
Heavy & Light industrial
Rail served



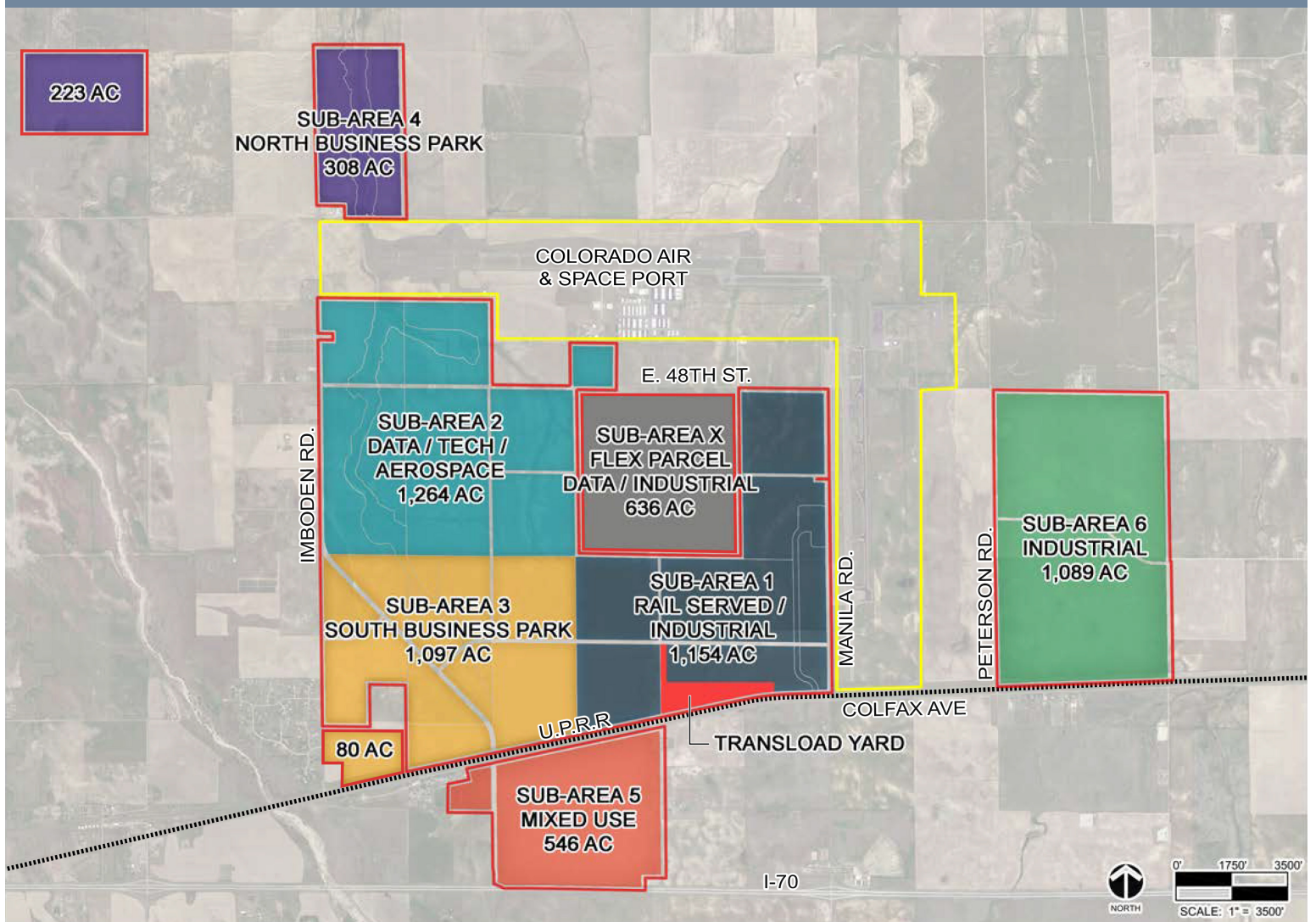
City/County
Aurora / Adams



Utilities
Available now



Price
Priced to quote



LOCATION

<2 min

Colorado Air &
Space Port

<2 min

Interstate
70

10 min

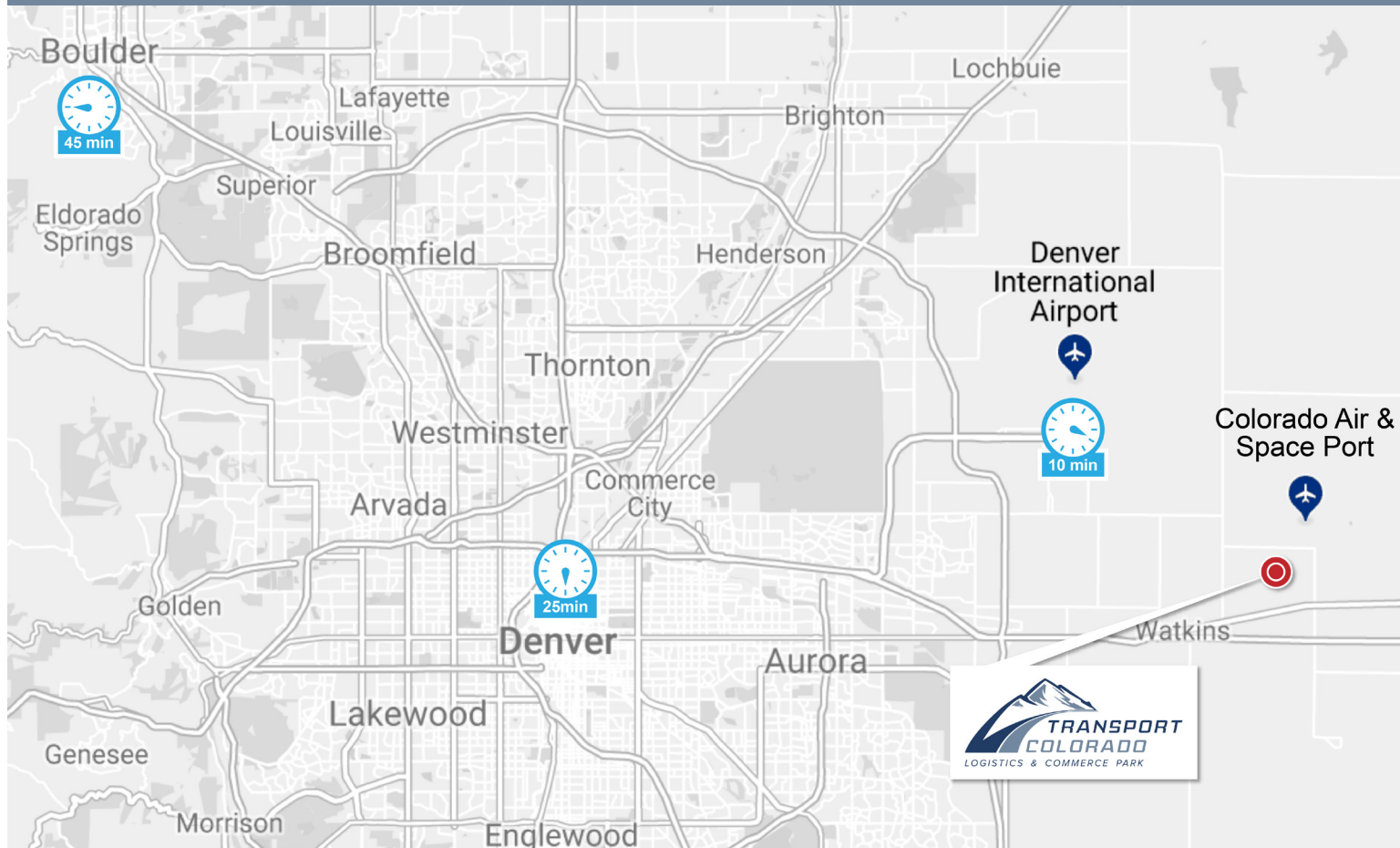
Denver's primary
industrial market

10 min

Denver International
Airport (DEN)

25 min

Downtown
Denver



FOR FURTHER LEASING INFORMATION PLEASE CONTACT:

MITCHELL H. ZATZ, SIOR

+1 303 217 7972

MITCH.ZATZ@AM.JLL.COM

CARMON HICKS, SIOR

+1 303 217 7975

CARMON.HICKS@AM.JLL.COM

JASON WHITE

+1 303 390 5200

JASON.WHITE@AM.JLL.COM

NICK STEITZ

+1 303 390 5212

NICK.STEITZ@AM.JLL.COM

STEVEN MARSHALL, PRINCIPAL

+1 858 752 2582

SMARSHALL@WESTERN-ENERGY.COM



WWW.TRANSPORTINDUSTRIAL.COM

WWW.TRANSPORTCOLORADO.COM